



# TRAINING PLAN

Subject	
<b>RIC Operations – RIC Deployment Drill</b>	
Instructors	
<b><u>A</u></b>	<b><u>B</u></b>
<b><u>C</u></b>	
Logistics	
<b><u>Time Required</u></b> 2 hrs.	<b><u>Equipment Needed</u></b> Full PPE and Tools for Crews Training Frequency (Notification to Dispatch) Smoke Machine(s) w/ power source and fog fluid Adult Mannequin w/ turnouts, SCBA, and PASS 1 Engine supply the equipment of the "1st Due" Props Built on Site

## DESCRIPTION

### Objectives:

1. Establish and support a Rapid Intervention Crew.
2. Conduct a RIC size-up.
3. Establish an appropriate minimum tool compliment for the RIC.
4. Demonstrate proficiency in performing the functions of RIC.
5. Identify the strategic and tactical considerations of Commanding the RIC during a FF emergency.
6. Perform a critique of the incident (drill) for analysis and suggestions.

### Description / Outline:

The focus of the Multi-Company Drill will be to build on the skills sets developed in the previous FF Survival and RIC drills as they apply to an actual deployment for a firefighter emergency.

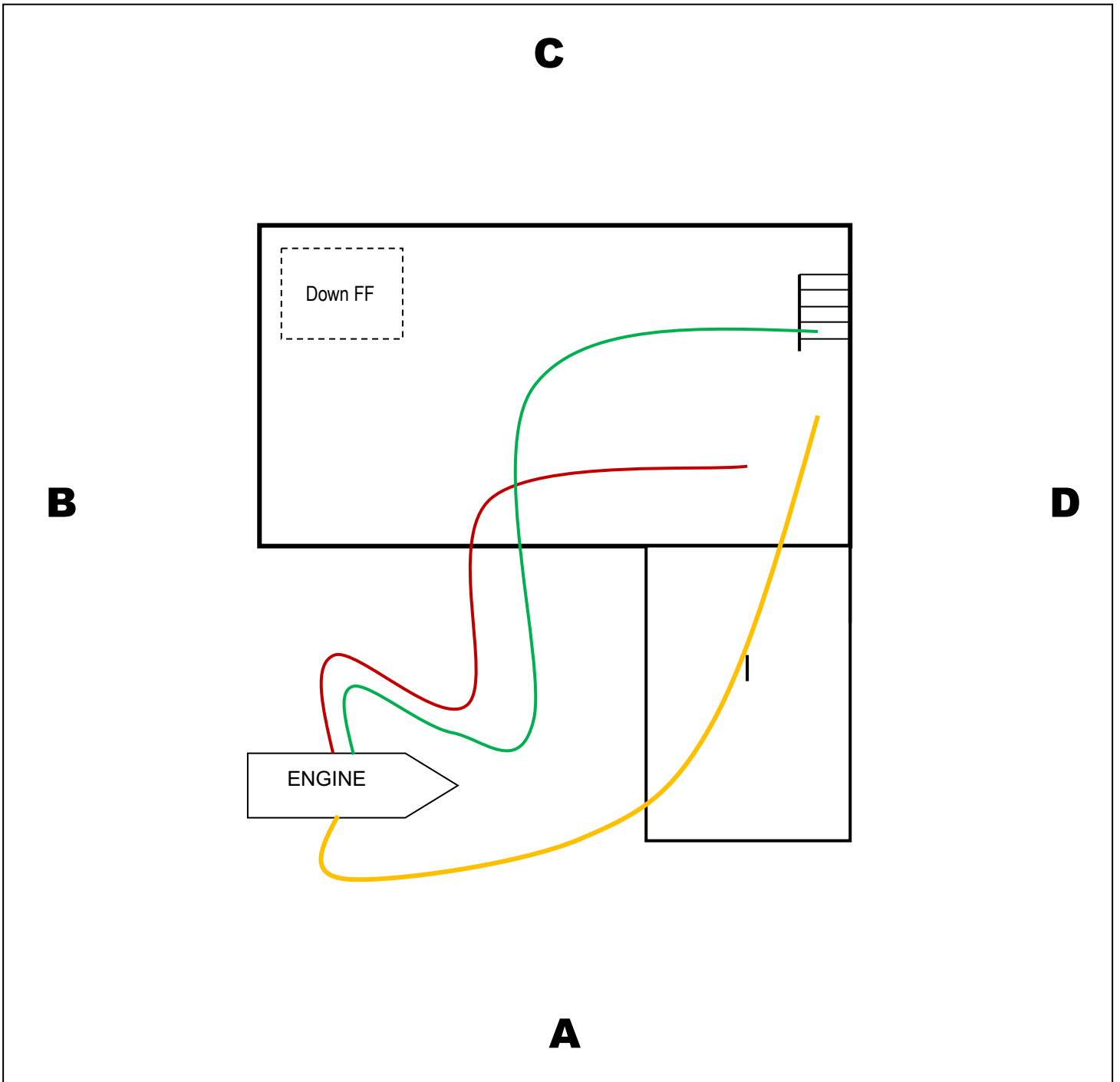
All companies participating in the drill will be assigned within RIC Group, at the discretion of the command officer. Fireground companies will be simulated on scene by the proctors to provide realistic radio transmissions, and allow the RIC companies to focus on the performance of RIC specific skills.

### Safety Message:

*This will be a physically demanding evolution. Encourage proper hydration and rehab. for crews*

Prepared By:		Date / Date Revised:
J. Calista		Nov. 2015

# DRILL DIAGRAM



Notes:

# **Radio Traffic Script**

All Radio Traffic On Designated Training Frequency

## **Dispatch: (Given by Yolo Co. Dispatch if Available)**

*Attn. ??? Fire Personnel...Structure Fire at 123 Main Street.  
E1, E2, E3, E4, T1, Bat ??, Structure Fire at 123 Main St.  
Multiple Calls.*

## **Proctor(s) to Confirm Response as E1, E2, E3, E4, and T5**

### **Size-Up / On-Scene Reports: (Proctors)**

*E1 is on scene of a 2 story, multi-family dwelling with smoke visible from the A-Alpha side of the structure. E1 will be passing command and taking fire attack with a 1 ¾" Preconnect through the A-Alpha side, we have our own supply.  
Engine 2, take command and 2-Out.*

(15 second delay)

*E2 is on scene, Establishing Command and pulling the 2-Out Line*

(15 second delay)

*T5 is on scene, spotting the Bravo-Charlie corner...all out for ventilation*

*Battalion 45 on scene...assuming Main St. Command*

(30 second delay)

## **DRILL Companies Arrive on scene**

**Battalion Chief to assign the first unit to arrive as RIC.**

**“Mayday” Transmission: (Proctor)**

*“Mayday, Mayday, Mayday...FF Smith, E1Back-Up. I’ve been involved in a collapse and I can’t free myself”*

Command to acknowledge the “Mayday”, conduct a PAR and assign crews accordingly.  
If Command does not acknowledge, or the transmission is broken, repeat.

**Additional information to offer if requested: (Proctors)**

- *Last Known Location / Assignment: Nozzle FF stretching 1 ¾” to 2<sup>nd</sup> floor C/D corner*
- *Activate PASS manually (if it has not already activated)*
- *Injuries: Unknown*
- *Entanglement/Entrapment due to partial collapse*
- *Update air supply when requested*
- *Radio silence after a period of time*

**Additional Fireground Radio Traffic: (Provided by Proctors)**

- *PAR from all units (E1, E2, E4, T5)—E3 Capt. to update PAR 2...Missing Nozzle FF*
- *Report on Conditions from E1...Making progress on fire knockdown, unable to determine amount of fire extension*
- *Report on Conditions from E4...Heat but no visible fire on the D side at this time*
- *Report from T5...The rear of the structure has been opened up (allow access and removal via any method chosen)*
- *Continued radio traffic and conditions report from interior/exterior crews throughout duration of the incident.*

**\*Drill is terminated upon successful removal of the Down FF and request for EMS/patient care.**

# RIC Review

## Critique / Discussion Points

<b>Size-Up for RIC</b>		
<b>Dispatch / En-Route</b>	<b>On Scene</b>	<b>Continued on the Fireground</b>
<ul style="list-style-type: none"> <li>▪ Report from Dispatch</li> <li>▪ Additional Reports</li> <li>▪ Area/Building Responding To</li> <li>▪ Size-Up from 1<sup>st</sup> Due</li> </ul>	<ul style="list-style-type: none"> <li>▪ B – Building</li> <li>▪ E – Extent of Smoke/Fire</li> <li>▪ L – Location of Smoke/Fire</li> <li>▪ O – Occupancy</li> <li>▪ W – Water Supply</li> <li>▪ U – Units Operating                             <ul style="list-style-type: none"> <li>▫ Who?</li> <li>▫ What are they doing?</li> <li>▫ Where are they?</li> </ul> </li> <li>▪ Forcible Entry Concerns</li> <li>▪ Access/ Egress</li> <li>▪ Tools &amp; Equipment</li> <li>▪ Proactive RIC ?                             <ul style="list-style-type: none"> <li>▫ Consider the potential influence on fire behavior</li> </ul> </li> <li>▪ Face-To-Face w/ Command</li> </ul>	<ul style="list-style-type: none"> <li>▪ Continually updated based on current and predicted fire behavior</li> <li>▪ Listen to Radio Traffic</li> <li>▪ Recon—Be Proactive</li> </ul>

<b>RIC Tools and Staging</b>		
<b>Level 1 RIC</b> Engine Co.	<b>Level 2 RIC</b> Engine and Truck Co.	<b>Level 3 RIC</b> Engine, Truck and Rescue Co.
<ul style="list-style-type: none"> <li>▪ Irons</li> <li>▪ Large Area Search Rope</li> <li>▪ RIC Pack</li> <li>▪ TIC</li> </ul> <p><i>Additional Tools if Available:</i></p> <ul style="list-style-type: none"> <li>▪ Ground Ladders</li> <li>▪ Circ. Saw</li> </ul>	<ul style="list-style-type: none"> <li>▪ Level 1 RIC Tools (x2)</li> <li>▪ Ground Ladders</li> <li>▪ Circ. Saws</li> <li>▪ Chainsaws</li> </ul>	<ul style="list-style-type: none"> <li>▪ Level 1 RIC Tools (x3)</li> <li>▪ Level 2 RIC Tools</li> <li>▪ Additional Technical Rescue Tools and Equipment as necessary</li> </ul>
<p><b><u>Staging Location</u></b></p> <p>Consider staging equipment at a corner of the building. This provides visibility of at least 2 sides of the incident and crews operating on the fireground.</p>		

<b>RIC Positions</b>			
<b>Captain</b>	<b>Engineer</b>	<b>FF1</b>	<b>*FF2</b>
<ul style="list-style-type: none"> <li>• Full PPE w/ Radio</li> <li>• TIC</li> <li>• Tag Line (In Pocket)</li> </ul>	<ul style="list-style-type: none"> <li>• Full PPE w/ Radio</li> <li>• LAS Bag</li> <li>• Hand Tool</li> </ul>	<ul style="list-style-type: none"> <li>• Full PPE w/ Radio</li> <li>• Irons</li> <li>• Tag Line (In Pocket)</li> <li>• RIC Pack</li> </ul>	<ul style="list-style-type: none"> <li>• Full PPE w/ Radio</li> <li>• Hand Tool</li> <li>• Tag Line (In Pocket)</li> </ul>
<ul style="list-style-type: none"> <li>• Direct the Search</li> <li>• CAN Reports</li> </ul>	<ul style="list-style-type: none"> <li>• Anchor <ul style="list-style-type: none"> <li>▫ Anchor outside</li> <li>▫ Shldr. Patch (ID)</li> <li>▫ Point-to-Point</li> </ul> </li> <li>• Anchor Near FF</li> <li>• Search for 2<sup>nd</sup> Exit</li> <li>• Assist with Removal</li> </ul>	<ul style="list-style-type: none"> <li>• PAC CAN</li> <li>• Air Supply</li> <li>• Packaging</li> <li>• Assist with Removal</li> </ul>	<ul style="list-style-type: none"> <li>• Assist w/ Packaging</li> <li>• Assist with Removal</li> </ul>

<b>The RIC Deployment</b>	
<b>RIC Crew(s)</b>	<b>Command / RIC Group Sup.</b>
<ul style="list-style-type: none"> <li>□ Size-Up <ul style="list-style-type: none"> <li>▪ En-Route</li> <li>▪ On-Scene</li> <li>▪ Continuous</li> </ul> </li> <li>□ Tool Cache / Staging <ul style="list-style-type: none"> <li>▪ Minimum Tools</li> <li>▪ Corner of the Building</li> <li>▪ Request Additional Resources if Necessary (Level 2, 3, etc.)</li> </ul> </li> <li>□ Proactive Functions <ul style="list-style-type: none"> <li>▪ Consider Influence on Fire Behavior</li> </ul> </li> <li>□ Deployment <ul style="list-style-type: none"> <li>▪ Confirm LUNAR information</li> <li>▪ Announce Entry and PAR</li> <li>▪ Search conducted efficiently</li> <li>▪ Locate / Communicate</li> <li>▪ PAC CAN</li> <li>▪ Request Additional Resources</li> <li>▪ Exit Strategy</li> <li>▪ Air Supply</li> <li>▪ Packaging</li> <li>▪ Removal</li> <li>▪ EMS</li> </ul> </li> </ul>	<ul style="list-style-type: none"> <li>□ Size-Up and Assign Resources <ul style="list-style-type: none"> <li>▪ Fireground</li> </ul> </li> <li>□ Establish RIC <ul style="list-style-type: none"> <li>▪ Appropriate Level based on Building / Occupancy / Hazards</li> </ul> </li> <li>□ Acknowledge the MAYDAY <ul style="list-style-type: none"> <li>▪ LUNAR</li> <li>▪ Deploy RIC</li> </ul> </li> <li>□ Command FG – RIC Functions <ul style="list-style-type: none"> <li>▪ Request Additional Alarm(s)</li> <li>▪ RIC Grp. Sup. (Safety Officer)</li> <li>▪ Additional TAC Channel</li> <li>▪ Accountability /PAR</li> </ul> </li> <li>□ Additional Resources as Necessary <ul style="list-style-type: none"> <li>▪ Additional RICs</li> <li>▪ Additional FG Resources</li> <li>▪ EMS &amp; Patient Care</li> <li>▪ Additional Chief Officers</li> <li>▪ City Coverage</li> </ul> </li> </ul>

**Notes:**



# STRUCTURE FIRE

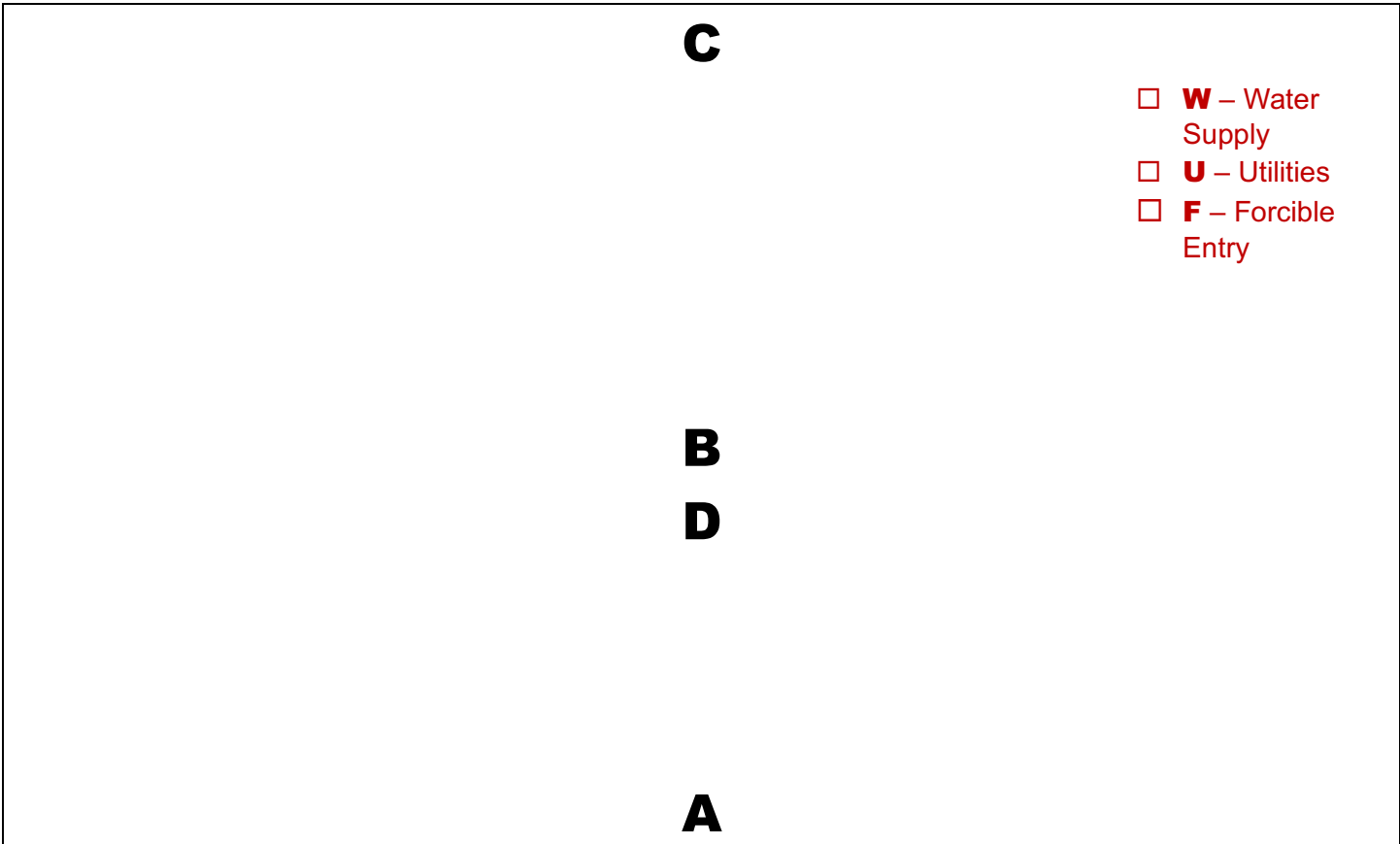
TACTICAL WORKSHEET

**SIZE -UP**

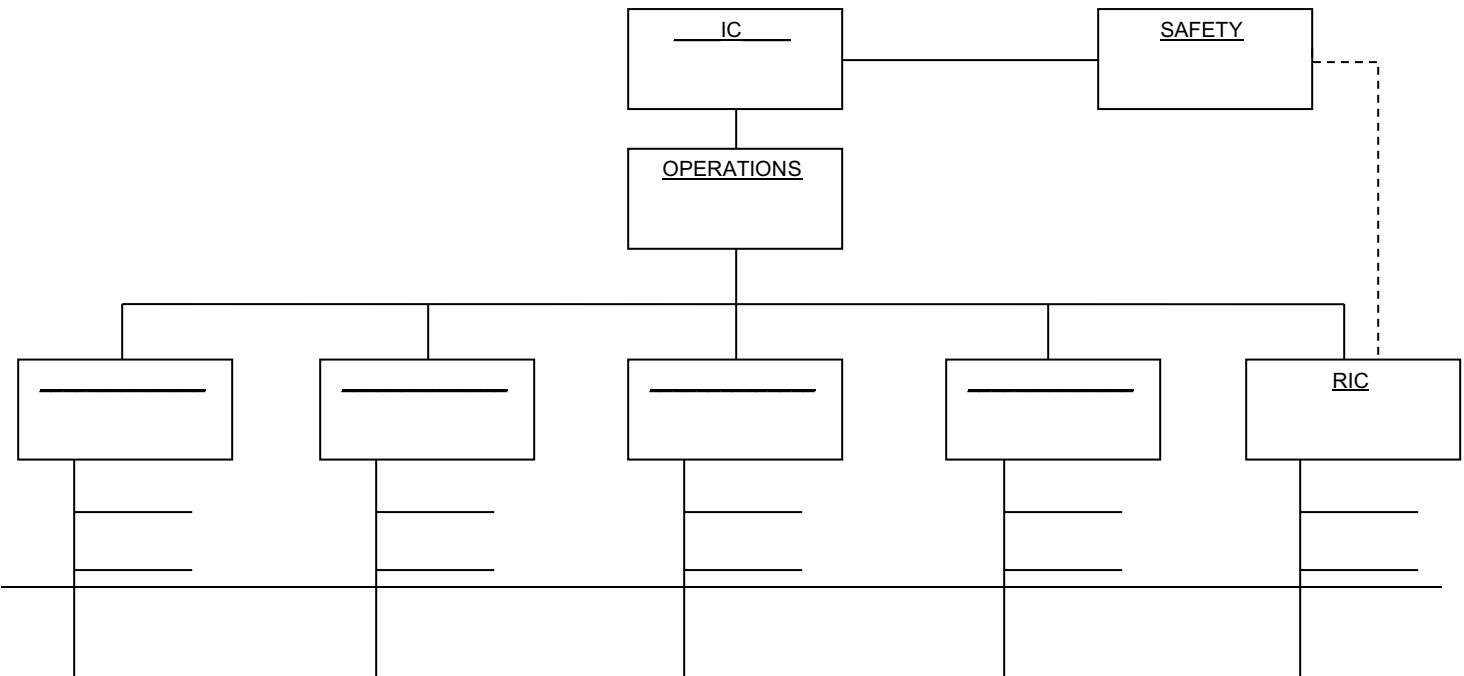
- B** – Building
- E** – Extent
- L** – Location
- O** – Occupancy
- W** – Water
- U** – Units

Incident Name: \_\_\_\_\_

TAC Channel: \_\_\_\_\_



- W** – Water Supply
- U** – Utilities
- F** – Forcible Entry



---



---



---



---



---

<input type="checkbox"/> Fire Under Control/ Ext. <input type="checkbox"/> Extension & Overhaul <input type="checkbox"/> Investigator <input type="checkbox"/> Rehab	<input type="checkbox"/> Primary Search <input type="checkbox"/> Secondary Search <input type="checkbox"/> EMS	<input type="checkbox"/> Salvage <input type="checkbox"/> Board-Up	STAGING		
			ENGs	TRKs	SPEC.





# RIC GROUP SUPERVISOR

RIC TAC Channel: \_\_\_\_\_

FG Ops Channel: \_\_\_\_\_

- Request Additional Resources / RICs
- Recommend Next Greater Alarm(s)

**L -**  
**U -**  
**N -**  
**A -**  
**R -**

**C**

**B**

**D**

**A**

RIC Company	Operational Times		Progress		CAN
			Knots	Air	
PAR: Entry Pt.: _____	IN				
	TURN AROUND				
	OUT				
PAR: Entry Pt.: _____	IN				
	TURN AROUND				
	OUT				
PAR: Entry Pt.: _____	IN				
	TURN AROUND				
	OUT				
PAR:	IN				
	TURN AROUND				

Entry Pt.: \_\_\_\_\_

**OUT**